

## SUCCESS IN ONE OF THE WORLD'S LARGEST AND RICHEST GOLD DISTRICTS

Nevada Gold Mines' Cortez/Pipeline complex, viewed from the Robertson Property.



### CORAL GOLD PROPERTIES

**Coral Gold's** properties are all located in Nevada, USA. Nevada produces >5% of the world's gold and 83% of United States' gold, and in 2018 it was ranked 4th in world gold production behind China, Australia and Russia. One new gold mine enters production each year in Nevada.



**CORAL GOLD RESOURCES** (founded in 1985) is a successful precious metals company holding a sliding-scale royalty with Nevada Gold Mines (formerly Barrick Gold) on the 2,954-hectare (7,300 acres) Robertson Project in Nevada. With approximately \$13M in cash, Coral is well-positioned to grow and benefit from Nevada Gold Mines' (NGM) approach to developing Robertson, which is strategically located adjoining NGM's world class Pipeline Gold Mining Complex.



### REASONS TO INVEST IN CORAL GOLD

- ▶ **Royalty with Nevada Gold Mines (formerly Barrick Gold)**  
Uncapped, sliding scale with advance royalty provisions.
- ▶ **Strong Balance Sheet with approx. C\$13M in Cash**  
Well funded for a junior company, plus a potentially significant revenue stream from royalties at Robertson.
- ▶ **Low Market Cap, Shares Trading Near Cash Value**  
Shares being repurchased by the Company through a Normal Course Issuer Bid, reducing the issued and outstanding.
- ▶ **Development & Drilling Underway**  
Nevada Gold Mines (NGM) is advancing Robertson aggressively, including over 40,000 meters drilling to expand current 2.7M oz inferred resource.
- ▶ **Prime USA Location**  
NGM's Cortez Gold Camp has produced nearly 20M oz of gold since 1994. Production averages nearly 1M oz per year.
- ▶ **Three Exploration Properties**  
Three properties on Nevada's Cortez Gold Trend, near the Robertson Project and with significant indications of gold mineralization and key geology.
- ▶ **Proven Mining Management**  
A proven track record in both good and bad markets.
- ▶ **Insider Holdings**  
Directors, management, insiders hold approximately 30% of issued and outstanding shares.
- ▶ **NGM Assaying is Increasing Robertson Grade Thickness**  
NGM reports whole core assaying has "increased the grade thickness and highlights a previous undersampling trend."
- ▶ **Robertson Resource Based on 2012 Stand-Alone PEA**  
Economics enhanced using existing NGM facilities. PEA excluded deeper mineral resources published in 2009.

### CORAL'S ROYALTY WITH BARRICK/NGM

| Average Gold Price/Oz During the Quarter | Applicable NSR Royalty Rate |
|--|-----------------------------|
| Up to & including \$1,200                | 1.00%                       |
| \$1,200.01 to \$1,400                    | 1.25%                       |
| \$1,400.01 to \$1,600                    | 1.50%                       |
| \$1,600.01 to \$1,800                    | 1.75%                       |
| \$1,800.01 to \$2,000                    | 2.00%                       |
| Over \$2,000                             | 2.25%                       |

US\$500,000 annual royalty payments begin Jan 1 2025 if Robertson not in production by Dec 31, 2024.



## MOVING FORWARD IN NEVADA

Nevada Gold Mines (NGM) is aggressively moving the Robertson Project forward to integrate the property into its production stream. NGM's Cortez/Pipeline complex, which adjoins Robertson, processes 17M tonnes of ore annually (producing 1.2M ounces gold) and requires constant mill feed. The advance royalty payment ensures Coral will receive revenue beginning January 1, 2024. With over C\$13 million in cash, a very favourable share structure and potential long-term royalty revenue, Coral is ideally poised to pursue its long-term vision for growth.

### Coral Gold Projects

#### Robertson

- ▶ NGM exploration focused on expanding shallow deposit and seeking deeper source gold.
- ▶ NGM's latest work is increasing the grade thickness, highlighting a previous under-sampling trend.
- ▶ NGM economics favourable.

#### JDN (100%)

- ▶ Adjoins the Cortez Hilltop deposit: indicated resource 700,000 oz Au.
- ▶ Underlain by the same formations that host the Hilltop deposits.
- ▶ Series of showings occur in the south central part of the JDN claim block.

#### Norma Sass (100%)

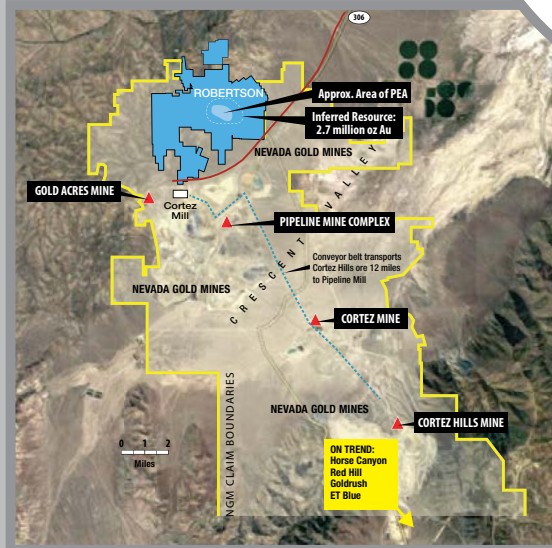
- ▶ Located immediately west of the Pipeline open pit mine.
- ▶ Significant exploration target.
- ▶ Previous drilling encountered gold hosted by favorable, lower-plate carbonate strata.

#### Eagle (100%)

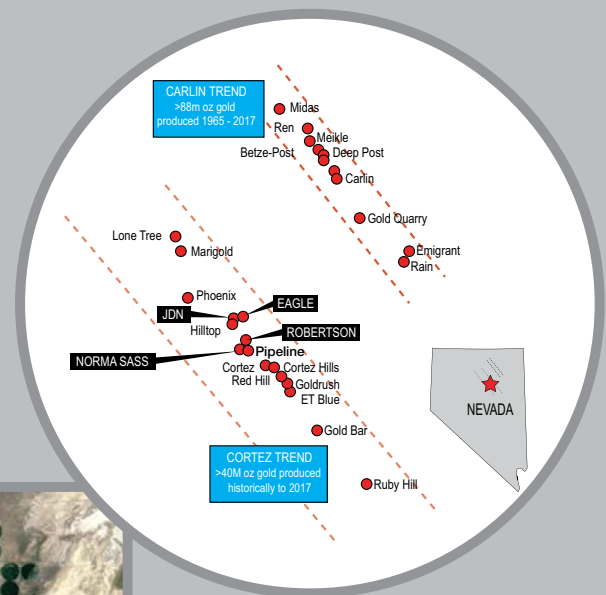
- ▶ Located just south of Hecla's Fire Creek mine.
- ▶ 28 holes drilled in two campaigns hit numerous intersections of anomalous gold.
- ▶ Drilling depths ranged from 120' to 700'.

NGM's Pipeline, Cortez Hills and Goldrush are three of the largest Carlin-type gold deposits in the world.

With the new Goldrush and Red Hill discoveries under development, NGM is examining new targets along the trend, including Robertson to the northwest.



The 7,300-acre Robertson Project (in blue), on which Coral holds a sliding-scale net smelter royalty with NGM, adjoins NGM's Cortez/Pipeline complex to the south.



#### MANAGEMENT

**David Wolfin**, President & CEO and Director  
**Gary Robertson**, Chairman & Director  
**Nathan Harte**, CFO  
**Ron Andrews**, Director  
**Andrew Kaplan**, Director  
**Rusty Price**, Director  
**Jennifer North**, Director, Corporate Communications

#### STOCK INFO\*

Shares Outstanding **46,144,837**  
 Warrants Outstanding **0**  
 Options Outstanding **4,122,500**  
 Fully Diluted **50,449,337**

\*As of April 24, 2020

**604.682.3701**  
 ir@coralgold.com  
 coralgold.com